



Initiative 20x20

Beginning to protect and restore **50 million** hectares of land in Latin America & the Caribbean by **2030**.

Through Initiative 20x20, countries and regional programs in Latin America and the Caribbean work with leading research organizations and the private sector to restore functionality to degraded lands, resulting in carbon storage, new reforestation, more productive agriculture, avoided deforestation and improved livelihoods.

UNSUSTAINABLE LAND USE DEGRADES LAND

Healthy forests and productive land are vital to the social and economic fabric of Latin America and the Caribbean. Agriculture and forestry contribute nearly US\$300 billion to the regional GDP and up to half of rural household income. Unsustainable practices in these industries can also cause deforestation and land degradation that drains land of its productivity, leaving fewer benefits for the people who depend on it.

50%

of rural household income comes from agriculture in some countries



49%

of emissions come from land-use change, forestry, and agriculture



At least

200m

hectares of land are severely degraded



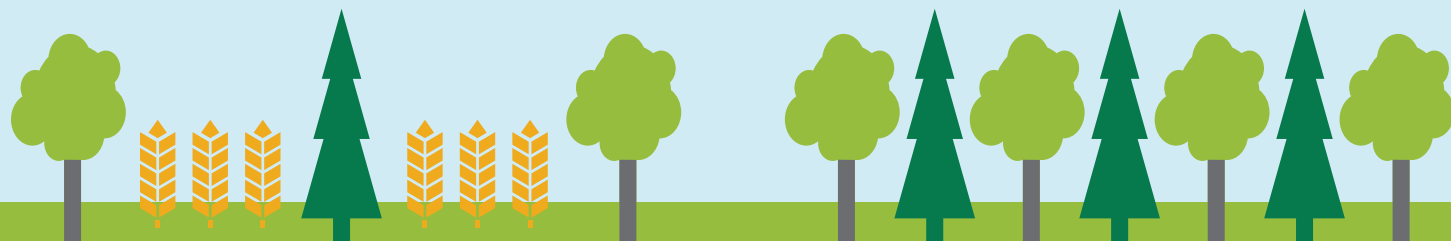
The region's ability to produce and export agricultural commodities is playing an increasingly important role in global food security and in rural livelihoods. This agricultural productivity is underpinned by ecosystem services provided by forests and natural ecosystems.

This is in stark contrast to the developed world's emissions profile, which is typically dominated by energy use and industrial emissions.

The amount of degraded land will continue to grow without action. Latin American and Caribbean countries need to address this problem to cut their greenhouse gas emissions, improve rural livelihoods, bolster food and water security and support biodiversity.

DEGRADED LANDSCAPES CAN BE RESTORED

As the amount of degraded land grows, so does the need to restore it to economic, social and environmental productivity. Restoring these landscapes to natural forest, agroforestry, silvopasture and sustainable agriculture will bring substantial economic and social benefits, as well as help protect climate, biodiversity and rural livelihoods at a local, regional and even global scale.



RESTORE TO MOSAIC LANDSCAPE

Establish and manage trees on active agricultural land, either through sustainable agroforestry or silvopasture, to improve crop productivity, provide feed for animals, increase soil fertility, or enhance water retention. This type of land management often greatly increases rural household incomes and improves food security.

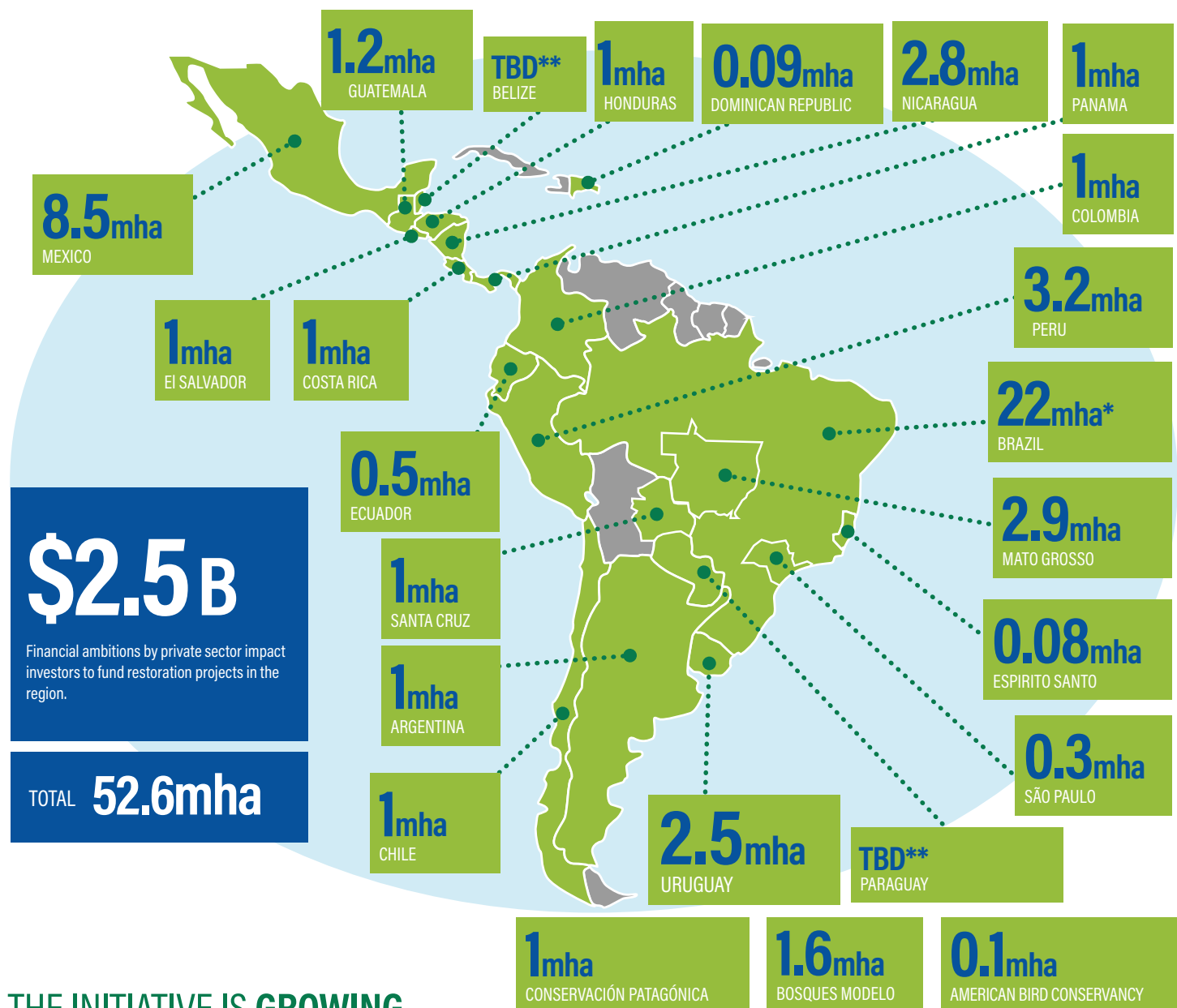
RESTORE TO FORESTS AND WILDERNESS

Restore and rewild degraded land. Restored forests will store carbon, improve soil and water quality, help bring back biodiversity, and can provide new sources of income to rural households.

A COUNTRY-LED PARTNERSHIP TO PROTECT AND RESTORE 50 MILLION HECTARES

Latin America and Caribbean governments, regional programs, private sector impact investors, NGOs and regional research organizations have come together to form Initiative 20x20.

The goal of 50 million hectares (mha) has been reached, with US\$2.5 billion earmarked to finance projects on the ground.



THE INITIATIVE IS GROWING

Initiative 20x20 will continue to garner commitments to protection and restoration beyond its goal of 50 million hectares. The partnership invites Latin America and Caribbean countries to join this regional movement that supports the ambitious global restoration targets set by the Bonn Challenge and the NY Declaration on Forests. Together, we can restore and rewild degraded lands to protect the environment and improve the lives of millions.

CONTACT US: luciana.gallardo@wri.org
FIND OUT MORE AT: initiative20x20.org

Initiative
20x20

Beginning to protect and restore **50 million** hectares of land in Latin America & the Caribbean by **2030**.

